

## Super-Selective DEB-TACE Performed Using TriNav in Patient with Hepatocellular Carcinoma

**SUMMARY:** Patient with 3cm hepatic dome HCC fed by branches of a replaced right hepatic artery off the SMA. A successful DEB-TACE procedure was performed using the TriNav Infusion System, with selective segmental delivery. Post-treatment C-arm CT confirms intense uptake in the tumor, and CT imaging from 6-weeks post-treatment shows good response as evidenced by less viable tumor.



Image 1: Pre-treatment CT imaging showing 3cm segment 8 tumor.

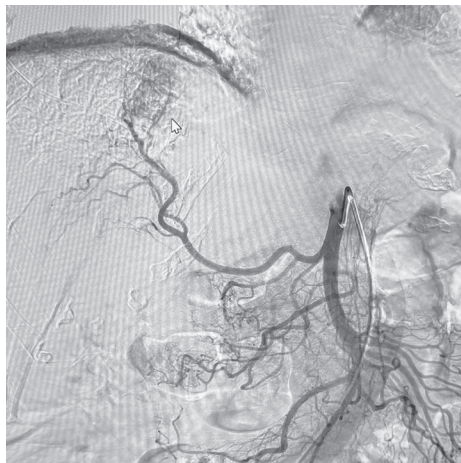


Image 2: Pre-therapeutic angiography shows replaced right hepatic artery off the SMA.

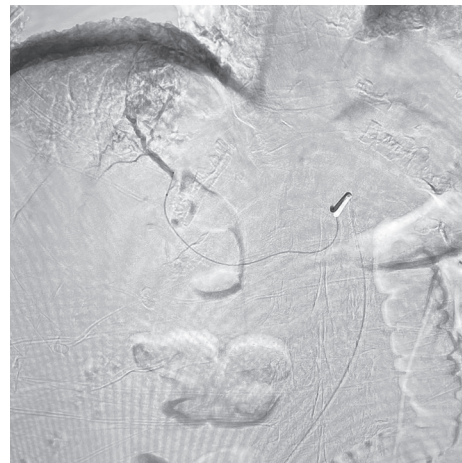


Image 3: Selective segment 8 treatment for the hepatic dome HCC demonstrates the trackability of TriNav for super-selective treatments.

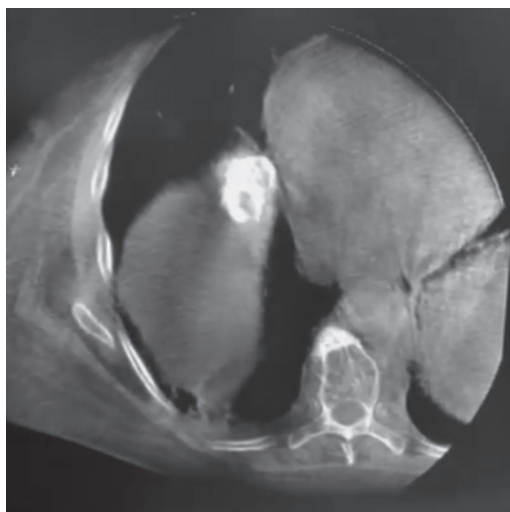


Image 4: Post-therapeutic C-arm CT showing intense tumor uptake.

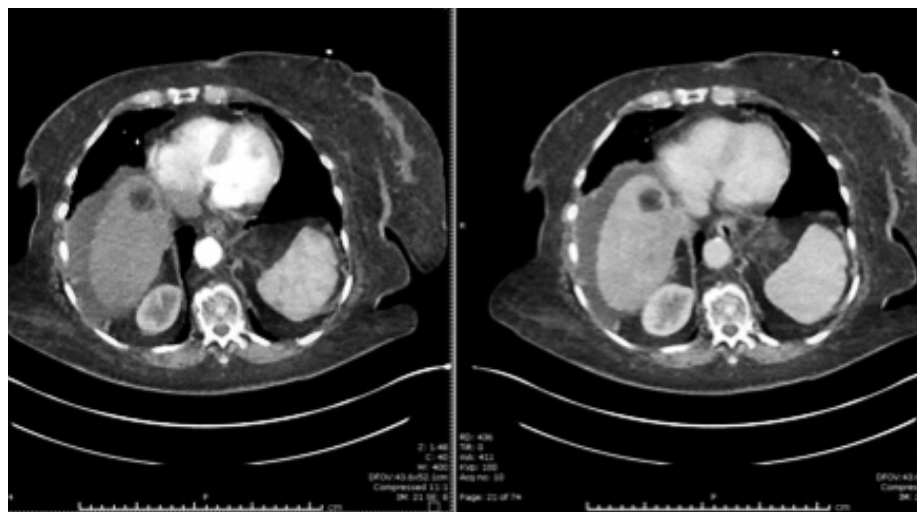


Image 5: 6-week follow-up CT imaging (arterial phase left; venous phase right).

This content is sponsored by TriSalus Life Sciences<sup>®</sup>. Results are not predictive of outcomes in other cases.

**INTENDED USE:** The TriNav Infusion System is intended for use in angiographic procedures. It delivers radiopaque media and therapeutic agents to selected sites in the peripheral vascular system.

**CONTRAINDICATIONS:** TriNav is not intended for use in the vasculature of the central nervous system (including the neurovasculature) or central circulatory system (including the coronary vasculature).

**Rx ONLY.** For the safe and proper use of the TriNav device, refer to the Instructions for Use.